

## ACCESSIBLE TEMPLATES

# BLACKBOARD ALLY CHECK GUIDANCE

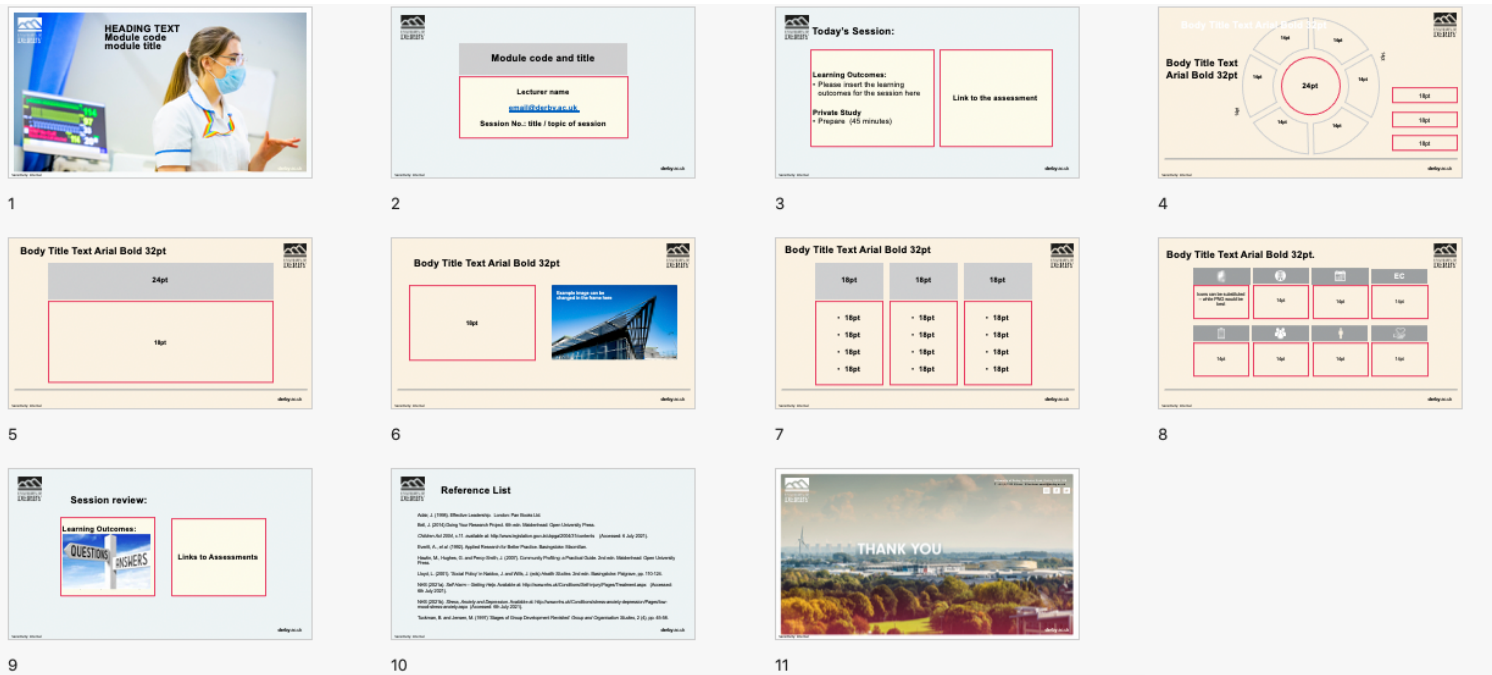
Murtaza Afzali

BLACKBOARD ALLY COORDINATOR  
UNIVERSITY OF DERBY  
M.AFZALI@DERBY.AC.UK

### Introduction / rationale

The College of HPSC is committed to ensuring all our resources are fully inclusive and professional, and compliant with the Public Sector Bodies (Websites and Mobile Applications) (No. 2) Accessibility Regulations 2018. As part of the commitment to continual improvement of the student experience, the Discipline of Radiography is seeking to standardise processes including PowerPoint design. This will ensure all students within a programme have consistent expectations about teaching content to support their high achievement. This does not serve to prescribe teaching approaches, rather than to manage expectations and structure links between teaching, learning, assessment and success.

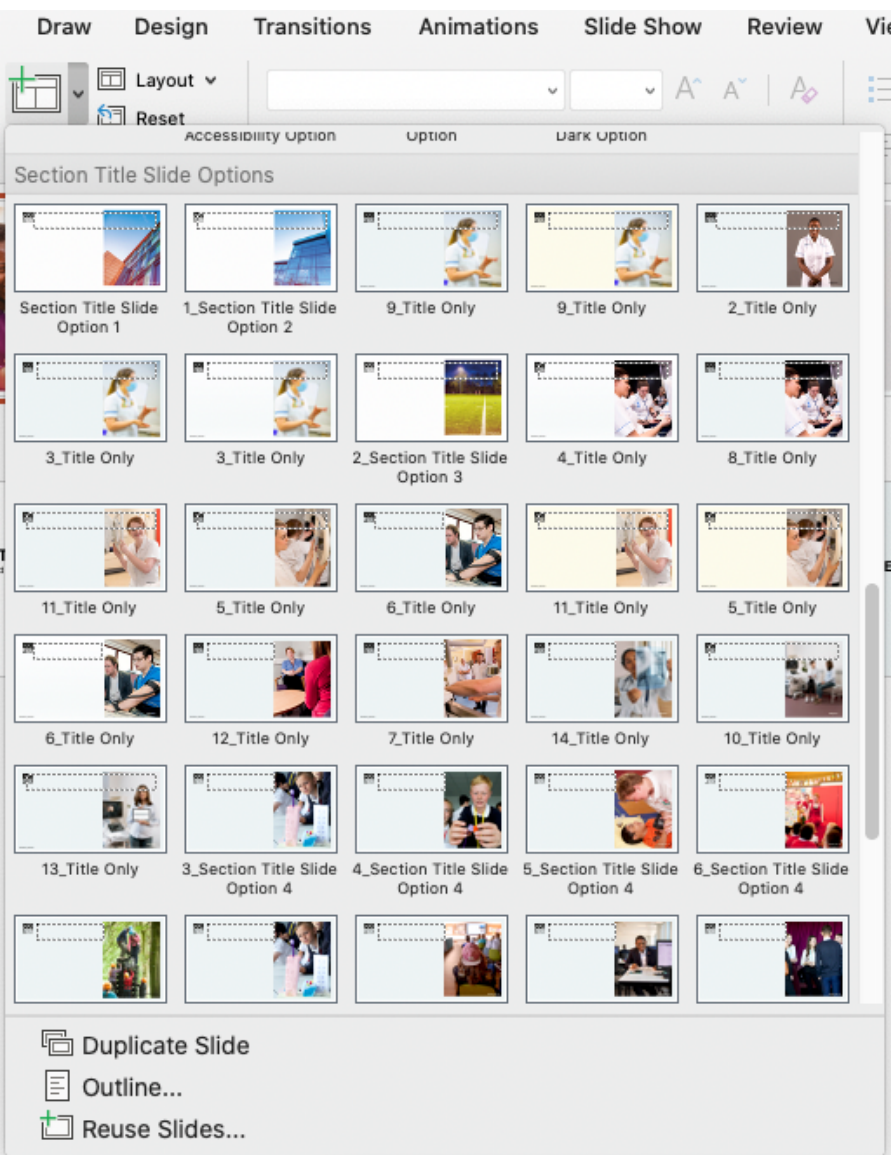
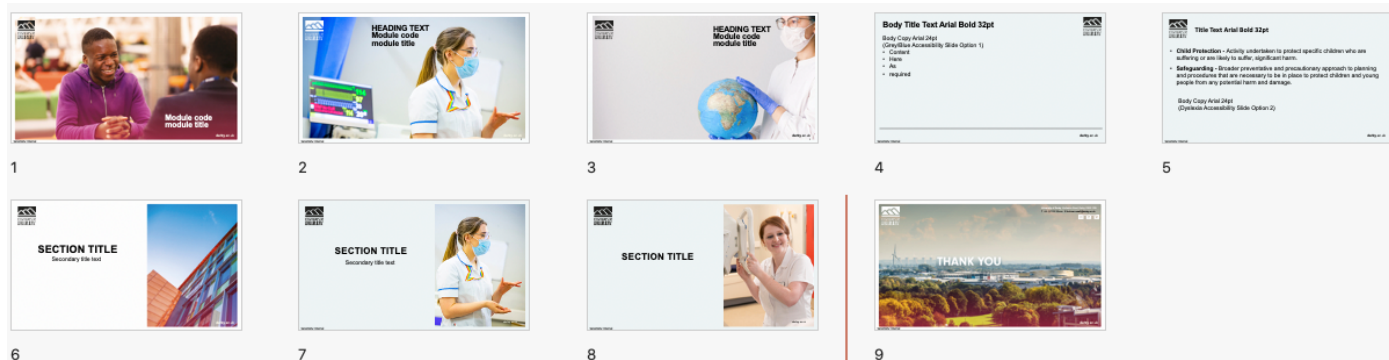
The template provided includes explicit inclusion of session learning outcomes, non-contact private study tasks, links to the assessment, links to employability/sector National Occupational Standards or competencies, a reference list to enable further and wider reading and contact information for the lecturer. There is also a bank of images to use for the opening slide and section dividers, as appropriate. They all use pastel-coloured slides to support accessibility for students with dyslexia and other visual learning needs.



## 1. CORE CONTENT FORMAT

Each session where PowerPoints are provided should include the following content and slides:

1. Opening slide to include module code, title and session number and indicative theme
2. Slide to include explicit session learning outcomes and private study tasks
3. Slide to include links to assessment and sector competencies and opportunity to review learning / ask questions
4. Reference list slide
5. Thank you slide to include contact details of lecturer
6. Optional Content Format



# ACCESSING THE IMAGE BANK AND FURTHER SUPPORT

## 2. GENERIC RADIOGRAPHY TEMPLATE ACCESSIBILITY CHECKED TEMPLATE:

To access the Image Bank:

- 1 – Select 'home' tab.
2. Click on 'new slide' arrow to reveal optional slides and images.
3. Select appropriate image for your session.
4. Save as 'name your PPT in your local folder in preparation for uploading onto Blackboard as per University requirements.

You may choose to include sub-section divider slides with a half-page image which are provided. There are a range of formats for different types of content including tables, charts and bullet points to be selected and overwritten as appropriate.

You may also choose to include sub-section divider slides with a half-page image which are provided. There are a range of formats for different types of content including tables, charts and bullet points to be selected and overwritten as appropriate.

Should you require a team tutorial on their use, please contact [M.afzali@derby.ac.uk](mailto:M.afzali@derby.ac.uk) who can provide further support to implement the template. Within this academic year, it is expected to ensure all PowerPoints are compliant which will transform the accessibility of our college access requirements.